

**MORETON BAY
YACHT CLUB**

MEMBERS HANDBOOK

and

BY-LAWS

2009/2010



CONTENTS

- 1. AFFILIATION AGREEMENT**
- 2. INTRODUCTION**
 - 2.1 Cruising Information**
 - 2.2 WAGS, SAGS and Twilight Races**
 - 2.3 Safety and seaworthiness**
 - 2.4 Handbook and club burgee**
- 3. MANAGEMENT COMMITTEE & CONTACT DETAILS**
 - 3.1 Management committee**
 - 3.2 Contact points**
- 4. MANAGEMENT COMMITTEE MEMBERS' DUTIES**
- 5. FEES & INSURANCE**
 - 5.1 Membership fees**
 - 5.2 Race entry fees**
 - 5.3 Visiting boat race fees**
 - 5.4 Association and member insurance**
- 6. NOTICES OF RACE & SAILING INSTRUCTIONS**
- 7. CLUB CHAMPIONSHIP and POINT SCORING SYSTEM**
 - 7.1 Club championship**
 - 7.2 Low points scoring system**
- 8.0 PERFORMANCE HANDICAP**
 - 8.1 Establishing handicap**
 - 8.2 Corrected times**
 - 8.3 Handicap adjustment**
 - 8.4 Season commencement handicap**
 - 8.5 Special series handicaps**
 - 8.6 Modifications affecting handicaps**
- 9.0 ANNUAL SAILING EVENTS**
- 10.0 MARKS of the COURSE, the RACE AREA and COURSE DIAGRAMS**



1. Moreton Bay Boat Club and Moreton Bay Yacht Club Affiliation Agreement

The Moreton Bay Yacht Club (MBYC) is affiliated with the Moreton Bay Boat Club (MBBC) in recognition of the fact that the MBBC has total responsibility to the Port of Brisbane Corporation for the conduct of its members boating and social activities under the Head Lease Agreement.

This Affiliation Agreement requires the MBYC to pay an annual rent as per a tenancy arrangement with MBBC for the use of covered and open hardstand space for storage of trainee dinghies, rescue boat and ancillary equipment. It is also a requirement that full, associate or social membership of MBBC is current before applying for membership of MBYC.

As the MBYC conducts its' meetings and sailing activities on and from the MBBC leased area, the MBYC and its' members must observe and abide by the MBBC Rules relating to membership responsibilities.



2. INTRODUCTION

Welcome to the Moreton Bay Yacht Club (MBYC) which sails from the Scarborough Boat Harbour at the northern end of the Redcliffe Peninsula. The MBYC gratefully accepts the use of the clubhouse facilities provided by the Host organisation, the Moreton Bay Boat Club (MBBC). When using those facilities, all members and guests are governed by the rules of MORETON BAY BOAT CLUB.

The MBYC currently has approximately 90 active members sailing approximately 30 participating yachts. Both racing and cruising activities are offered by the MBYC and new participants are most welcome.

Races are conducted throughout the year with the MBYC championship races being held between August and May while social events (including WAGS, SAGS and Twilight Races) and cruises are organised throughout the entire year. An average race day sees 10 to 25 boats on the water competing in one or two divisions as deemed necessary by the race committee. The fleet comprises a range of vessels including trailer sailers, keel boats and multihulls.

Trophy night, where the season's trophies and prizes are presented, is generally held in June each year.

MBYC membership entitles you to a Member's Handbook (which includes the Associations' By-laws), sailing/racing calendar, discount on the club burgee and all regular notices and sailing instructions.

A register of Crew Wanted and Crew Available has been established. For further information please contact the secretary.

2.1 Cruising information

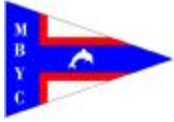
Cruises are organized throughout the year usually on long weekends, at Easter and during school holidays with a longer cruise over the Christmas/New Year.

The cruises sail to various anchorages on Moreton Bay, the Broadwater, Brisbane River and Mooloolaba. Informal cruises can also be arranged with other club members if the weekend looks good.

A Cruising Co-ordinator is informally appointed annually and may be contacted on the telephone number shown in Section 3 of this handbook.

Major cruises are marked on the sailing/racing calendar. Other cruises may be arranged from time to time.

Vessels generally communicate via VHF channel 77.



2.2 WAGS, SAGS and Twilight events

Wednesday Afternoon Good Sailing (WAGS) Saturday Afternoon Good Sailing (SAGS) and Twilight events are fun “cruising in company” competitions normally sailed in Deception Bay. Spinnakers and other "extras" are not allowed.

The events are run on a staggered start principle so that the majority of participants finish in close company.

The requirements for logging on/off by radio are generally not in force for these events. Single handed sailing will be permitted provided skippers log on (or otherwise make participation known) with the principal race officer (or designate) or at least one other boat in the fleet.

Members are encouraged to bring guests and socialize at the Moreton Bay Boat Club after the events.

In the interest of safety and fairness to smaller yachts in the fleet, races are cancelled if a “strong wind warning” is current for Moreton Bay **and** there is an easterly component.

2.3 SAFETY and SEAWORTHINESS

Safety and seaworthiness are inherent in the objects of the Club. Attention is drawn to the requirements of Maritime Safety Queensland under the auspices of the *Transport Operations (Maritime Safety) Act* and associated legislation. All participating yachts are obliged to comply with those requirements at all times.

Participants in events governed by the Racing Rules of Sailing must also comply with the associated Yachting Australia Special Regulations prescribed therein. MBYC events are generally Category 6 events with special events to Category 5, Category 4 and Category 3.

Participants in SAGS/WAGS events are governed by “Col REGS” viz. the International Regulations for Preventing Collisions at sea 1972, Part A, General.

The management committee reserves the right to carry out a safety compliance audit on any yacht at any reasonable time. Any yacht found not to comply with the appropriate safety regulations will be asked to show cause and may subsequently be disqualified from related events (or be otherwise penalised as may be deemed appropriate by the committee). Any such disqualification or penalty shall remain in force until compliance is achieved.

In the event of a gale warning being issued by the Bureau of Meteorology, any aquatic event organised for that day must be abandoned even if the event commenced prior to the warning.

2.4 HANDBOOK and CLUB BURGEE

The association policies, by-laws and general information are contained in the association handbook (this document). The handbook is available in electronic format free of cost to members. Hard copies will attract a nominal copying fee.

The handbook is re-published subsequent to each revision.

The association has a unique burgee that is available to members at a cost of \$20.00 for the first or replacement burgees. Additional burgees may be purchased at the non-member price of \$25.00.



3. MANAGEMENT COMMITTEE & CONTACT DETAILS

3.1 Management Committee

President	Mal Betts	0419 674 135	bettsboatelectrics@iprimus.com.au
Vice President	Darryl Wright	0408 936 962	dwright@boulderstone.com.au
Secretary:	Jackie Bowden	0412 902 131	secretary@mbyc.com.au
Treasurer:	Richard Combrink	044 834 1996	combrink@bigpond.com.au
Principal Race Officer	Michael O'Halloran	07 3888 0515	mike.olalloran@pmce.com.au
PRO assistant "on water"	Marc Stuart	0413866994	marcstuart001@msn.com
Handicapper	Nick Bruijn	0428 715 832	nabrun@optusnet.com.au
Property Officer	Peter Griffin	0418 889 723	pe52199@bigpond.net.au
Public Relations	John van Pelt	0422 967 241	john@jvpdesign.com
Webmaster	Bill Goodward	07 3889 0254	gouldrush@optusnet.com.au
SAGS Coordinator	Lyle Creffield	0407 961 705	avoca1@bigpond.net.au
WAGS Coordinator	Michael O'Halloran	07 3888 0515	mike.olalloran@pmce.com.au

The **formal management committee** as defined by the Association Rules comprises the president, vice-president, secretary, treasurer and property officer, principal race officer and handicapper.

3.2 Contact points

MBYC postal address: The Secretary
Moreton Bay Yacht Club.
P.O. Box 730,
Redcliffe, Qld 4020.

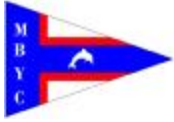
MBYC web page: www.mbyc.com.au

Email address secretary@mbyc.com.au

Visit our web page for event calendars, club news, race results club documents, sponsors and general information.

General meetings: Usually held every second month on the first Monday of the month, at the MBYC premises commencing at 7.30pm. Meeting dates differing from this are advised via the MBYC event calendar (refer web site www.mbyc.com.au).

Any issues and queries should be raised at the general meetings or with a member of the management committee.



4. MANAGEMENT COMMITTEE MEMBERS' DUTIES

All committee members are required to report any changed circumstances at the MBYC general meetings.

President:

- Overall responsibility for all the MBYC activities.
- Liaison with the MORETON BAY BOAT CLUB and other relevant bodies.
- Co-ordinate, with the Public Relations Officer, negotiation and liaison with sponsors.
- Chair monthly meetings.
- Author or sub-edit newsletters, reports and special notices.
- Liaise with the Vice President and Principal Race Officer in the production of Notice of Race and Sailing Instructions and the race calendar
- Post race announcements
- Development of Sailing/Events calendar with Committee.

Vice-president:

- Deputize for the president in their absence.
- Assist with newsletters and special notices.
- Assist the president in negotiation and liaison with sponsors.
- Race calendar (in association with other committee members).
- Responsibility for "on water" activities
- Ensure "Aquatic Event Authorities" are applied for

Secretary:

- Maintain club's records, handbook and registers.
- Receive and send all correspondence as per members and management committee directions.
- Record minutes of general and committee meetings.
- Process membership applications and updates.
- Act as communicator and custodian of incorporation registration matter.

Treasurer:

- Maintain financial records.
- Receive income and pay expenses as approved by the management committee.
- Collect race entry fees.
- Prepare forecasts of the annual budget as may be required from time to time.
- Prepare monthly financial reports and annual audits.

Public Relations Officer:

- Build sponsorship and liaise with current sponsors
- Prepare "Bay News" report
- Promote sailing Branch activities through Calendar, website and "Bay News"
- Co-ordinate with Treasurer and Secretary invoices and acknowledgement letter confirming their support
- Arrange for Sponsor's advertising material, banners, etc to be displayed. Seek Board permission when necessary
- Arrange trophies/prizes etc for presentation on trophy night



Principal race officer (PRO):

- Roster race officers and assistants.
- Assist the race officers in the selection of the courses for the days racing in conference with the management committee if necessary.
- Coordinate laying of the start/finish line and moveable marks of the course.
- Final decision on alteration to courses (e.g. shortening course) in conference with the management committee if necessary.
- Final decision on abandonment or postponement of a race given weather conditions and members' safety (in consultation with other management committee members.).
- Initiate Notices of Race (NOR) and Sailing Instructions (SI).

Handicapper:

- Allocation of handicaps to competitors.
- Publication and presentation of race results or to appoint an assistant when required.
- Posting of handicaps prior to next race.
- Compile and maintain Crew Register

YQ representative:

- Attend YQ general meetings as the member representative.
- Inform members of matters arising at YQ meetings.

Property officer:

- Maintain the MBYC asset register.
- Maintain branch property in good working condition.
- Ensure availability of equipment when required.
- Report any significant maintenance or replacements.

Cruising coordinator:

- Promote and coordinate the social sailing activities within the MBYC.

Webmaster: (public relations)

- Management and maintenance of the Association WEB site.
- Update race calendars and race results on the web site.
- Post notices and other matter on the web site that may be forwarded by committee members from time to time.
- Report any website management issue to the management committee.
- Highlight Sponsors on the website

SAGS coordinator:

- Schedule SAGS, WAGS and Twilight events
- Modify and post results and handicaps

New committee immediate actions:

- Notice of change of president and treasurer to the Office of Fair Trading.
- Notice of election of secretary to the Office of Fair Trading.
- Notice of insurance cover to the Office of Fair Trading.
- Review of member marine insurance cover compliance with by-law 4.5.
- Review of WAGS, SAGS & Twilight annual entry fees and appointment of a SAGS coordinator.
- Prepare budget for forthcoming year.



5. FEES

5.1 Membership fees

Ordinary member:	\$70.00 full voting rights (refer also cl. 5.2)
Associate member (Spouse/Partner)	\$10.00
Junior member	\$10.00 (under 18 years)
Social member	\$10.00
Nomination:	There is currently no nomination fee.

5.2 Race entry fees

Championship race entry:	Included in ordinary membership fee
Season race entry:	Included in ordinary membership fee
WAGS, SAGS, Twilights	Included in ordinary membership fee

Protest: There is currently no protest fee.

The race entry fees included within the ordinary membership fee covers only championship events. Special races/regattas and some social events may attract separate fees.

The special event fee ranges from \$20.00 to \$60.00 depending on the event.

5.3 Visiting Boat Race Fees

Visiting boats are eligible to enter 3 events in any season after which membership becomes a prerequisite to further participation.

Visiting boats will be assigned an arbitrary handicap and are eligible for a placing. However, visiting boats are not eligible for prizes nor are they eligible for championship points.

A visiting boat's performance during the 3 gratis races may be used as a basis for the establishment of a MBYC handicap (refer 8.0).

5.4 Association and member Insurance

The MBYC is required by regulation to maintain "association" insurance cover relevant to its activities. The association insurance covers any "claims made" against office bearers and members in the execution of any association duty either on land or on water. That insurance does not necessarily directly cover third party person or property damage resulting from an individual member's action or inaction while participating in organised club activities. Consequently, all participating vessels should have at least third party person and property cover (i.e. public liability) of minimum \$10,000,000. Any yacht participating in the formal racing events (i.e. any event held under the auspices of the Racing Rules of Sailing) **must** have third party insurance **including** "racing cover" to a minimum of 50 nautical miles **race length**. The MBYC signature event, the Fairway Challenge, requires racing cover to 100 nautical miles.

Social events (WAGS, SAGS and Twilights) are not generally considered formal races for insurance purposes. Notwithstanding, third party person insurance cover is required while third party property insurance is highly recommended. Yacht owners should have their insurers confirm that they are covered for any event entered.

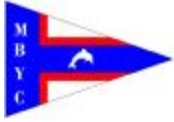


MORETON BAY YACHT CLUB
MEMBERS HANDBOOK and By-laws

Members must regularly compare current MBBC requirements against their own insurance cover. In any case, third party insurance cover is mandated for any boat using the MBBC marina or pontoons.

Each yacht owner (or designate) in charge of a yacht participating in formal racing events must submit to the secretary documentary evidence of appropriate insurance cover within 30 days of renewal of either insurance cover or membership.

[Aside:- This by-law ensures that any claim relating to third party person or property remains as an impost upon the individual members directly involved and is not progressed to the Association insurance arena to become an impost upon all members.]



6. NOTICES OF RACE & SAILING INSTRUCTIONS

Notices of race and sailing instructions will be published prior to the first event or series in all cases.

Instructions for WAGS, SAGS and Twilights are detailed in a separate dedicated handbook available in electronic format free of charge to members. Hard copies will attract a nominal copying fee.

7. CLUB CHAMPIONSHIP and POINTS SCORING SYSTEM

7.1 Club championship

Club championship points shall only be allocated to yachts that:-

- compete in the designated championship events, and
- have owners/skippers registered as MBYC ordinary members, and
- sail the designated events in compliance with the current Racing Rules of Sailing, and
- have proof of appropriate public liability insurance registered by the secretary.

The MBYC championship will be awarded to the yacht with the lowest points score for the championship season.

The MBYC championship events are highlighted on the sailing/racing calendar.

7.2 Low points scoring system

The Low Points Scoring System (Appendix A of the YA Racing Rules of Sailing) will be used with the following amendments:

1. The number of races will be as per the MBYC sailing/racing calendar.
2. The championship season allows for two discard races.
3. Any boats that do not start a race (DNS) shall score points as detailed in the sailing instructions.
4. Any boats that start but do not finish (DNF) shall score points as detailed in the sailing instructions.
5. Any boat establishing handicap (EH) shall not score points until a handicap is established. (refer cl. 8.1)



8. PERFORMANCE HANDICAP

Handicaps are performance based and are reviewed after each race by the handicapper. Adjustments are based on the processes described in cl. 8.3. Should a boat's performance alter drastically its handicap may be manually adjusted at the handicapper's discretion (refer 8.3.2). Significant adjustments will only be made in conference with the management committee (or a handicap sub-committee). All adjustments must be discussed with and agreed by the recipient prior to application and/or publication.

8.1 Establishing handicap

A new member or any existing member who changes boat may establish a new handicap by electing one of the following two methods:

- a) sailing two (2) handicap establishment races.

[The new handicap will be calculated by doubling the best result, adding the other result and then dividing by three. The handicapper will also consider the conditions and whether the boat was sailed to the best of the crew's ability to determine the MBYC handicap.]

- b) accepting a handicap assigned by the handicapper.

8.2 Corrected times

LEGEND

CT = Corrected time

BCT = Benchmark corrected time

HC = Handicap

AP = Achieved performance

ET = Elapsed time

EH = Establishing handicap

DNF = Did not finish

DNS = Did not start

PROCEDURE

- a) Elapsed time is converted to minutes and decimals.

[e.g. 2hrs 25min 30sec = 145.5 min.]

- b) Corrected time is calculated by multiplying elapsed time by handicap.

$$\mathbf{CT = ET \times HC}$$

The winning boat is the one with the lowest corrected time.

8.3 Handicap adjustment

The adjustment to a boat's handicap has two (2) components:-

1. **performance** adjustment, and
2. **manual** adjustment.

[Note:- A manual adjustment may be made to the entire fleet if an overall "creep" causes the MBYC performance handicaps to become misaligned with those of neighboring clubs. Any such creep is detected by examining handicaps and achieved performances of MBYC boats competing in inter-club events. An overall adjustment will only be made after the last race of the championship series and prior to the first race of the following championship series.]



8.3.1 Performance Adjustment

A benchmark corrected time (BCT) is normally calculated as the 20th percentile in the range of posted corrected times. This may be varied at the handicapper's discretion depending on both the spread and bunching of all CT's. It is generally set between the 20th and 40th percentiles.

From this BCT, the AP% for each boat is calculated.

$$\text{AP}\% = (\text{BCT}/\text{CT}) \times 100$$

Boats with an AP% equal to or above 103% will have an increase of 3%.

$$\text{HC}(\text{new}) = \text{HC}(\text{old}) \times 1.03$$

Boats with an AP% above 100% but less than 103% will have a new handicap of AP%.

$$\text{HC}(\text{new}) = \text{AP}\%/100$$

Boats with an AP% between 99% and 100% will have no change in handicap

$$\text{HC}(\text{new}) = \text{HC}(\text{old})$$

Boats with an AP% below 99% will have a new handicap of old handicap less 1%

$$\text{HC}(\text{new}) = \text{HC}(\text{old}) \times 0.99$$

8.3.2 Manual adjustment

Manual adjustments to handicaps may be made if:

- a) a boat has had a modification which will or has significantly affected its performance, or
- b) a boat's performance in any race, series or regatta indicates an inappropriate handicap.

8.4 Season commencement handicap

At the commencement of each sailing season, a boat's handicap will be reviewed and may be adjusted at the handicapper's discretion.

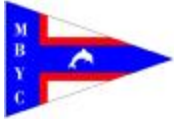
8.5 Special series handicaps

A boat's racing handicap will be used for the first race in a special series. For all subsequent races within the special series, adjustment is applied only for races within the special series. Hence a boat competing in championship races and a special series could have more than one concurrent but different handicaps, each associated with the relevant series.

8.6 Modifications affecting handicaps

If any yacht undergoes any modification (e.g. equipment or sail upgrades) that will have an effect on the yacht's current performance, the skipper of that yacht is required to notify the handicapper of that modification. Like for like replacement equipment is generally exempt.

Failure to do so may jeopardize the yacht's points or placings. The handicapper is empowered to re-calculate handicap results retrospectively in such cases.



9. ANNUAL SAILING EVENTS

9.1 Preamble

The MBYC organises special events aimed at fostering intra and inter-club competition and raising public awareness of sailing in the waters around the Redcliffe Peninsula. There are also specific inter-club events in which the MBYC participates and sometimes assists in the event organisation.

9.2 MBYC ORGANIZED EVENTS

FAIRWAY CHALLENGE



The Fairway Challenge was established in 2005 as a MBYC signature event.

The event includes short sprint legs along the Redcliffe Peninsula foreshore followed by an “out and back” passage to the NW Fairway mark off Caloundra. Finishing yachts berth at the MBBC

marina for a catered breakfast, entertainment and the prize presentation.

The course is roughly 80 nautical miles in length and is an open invitation to all eligible ocean going yachts.



BEXBROOK BURGLAR CLASSIC

The Bexbrook Burglar Classic is a novelty event which originated as a predicted log event followed by a competitor’s barbecue.



BEXBROOK

Participants were required to nominate their expected finishing time at a pre-race briefing.

Originally sailed as a conventional “no extras” event, the advent of GPS navigation tended to remove the “novelty”. Consequently, *mariner* related themes, tasks and restrictions are placed upon competitors by the organizer on the day. This has returned the “novelty”.

The event is usually held in the later part of the calendar year ideally coinciding with a members’ December function.

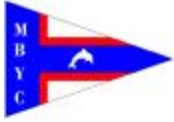
MUD ISLAND MARATHON



The Mud Island Marathon was sponsored by the late Ron Howell as far back as club historians can recall. It has taken various forms with the most popular being the basis of the current version

The event is basically an all day episode commencing at 10:am and generally concluding late afternoon. The start is to the North of the Scarborough Harbour entrance. The course marks are Reef Point, Brisbane Road, the Coffee Pots and Mud Island. The direction of rounding Mud Island is the skipper’s choice based on wind and tide.

The event is not recommended for yachts with a performance handicap below 0.6500.



SINGLE HANDED RACE

The single handed race is a mariner's event sailed under the Racing Rules of Sailing. Automatic helm devices are recommended but not mandatory. Spinnakers and other extras are allowed with handicaps adjusted accordingly. The event may be held at any time during the season but is most likely to be held late in the sailing season.

LADY SKIPPER'S RACE

The lady skipper's race is an event during which a female must helm the yacht for the duration of the event. If there is only a single female skipper, a 10 minute per hour rest break is allowed. The yacht's handicap will be its club handicap current at the time. Yachts not having a club handicap will be assigned an arbitrary handicap based on social racing history and/or potential design capability.

This politically incorrect event has varying constraints and rewards as may be dreamed up by the race committee and inserted into the sailing instructions.

The event is most likely to be held late in the sailing season.

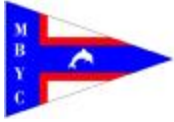
9.2 MBYC PARTICIPATION EVENTS

The MBYC promotes member participation in various inter-club events organized by neighbouring sailing clubs. These events are :-

- Brisbane to Gladstone Yacht Race (QCYC and PCSC)
- Surf to City (QCYC and SYC)
- Kingfisher Bay Inter-club Night Series (WMSC)
- Bribie Cup (QCYC and BISC)
- Otter Rock Plate (QCYC)
- Bay to Bay (HBSC)

MBYC competitors have been quite successful in these events commonly being placed at or near the front of the fleet.

The Kingfisher Bay Inter-club Night Series is currently most relevant to MBYC. The series is organized by the Wynnum Manly Sailing Club but each of the 4 races is managed on the day by one of the 4 major yacht clubs within Moreton Bay. The MBYC manages the 3rd race which is usually scheduled to be run in February each season. For this event the MBYC provides a committee boat and crew to start, monitor and finish the event.

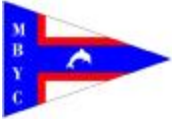


10. MARKS of the COURSE, the RACE AREA and COURSE DIAGRAMS

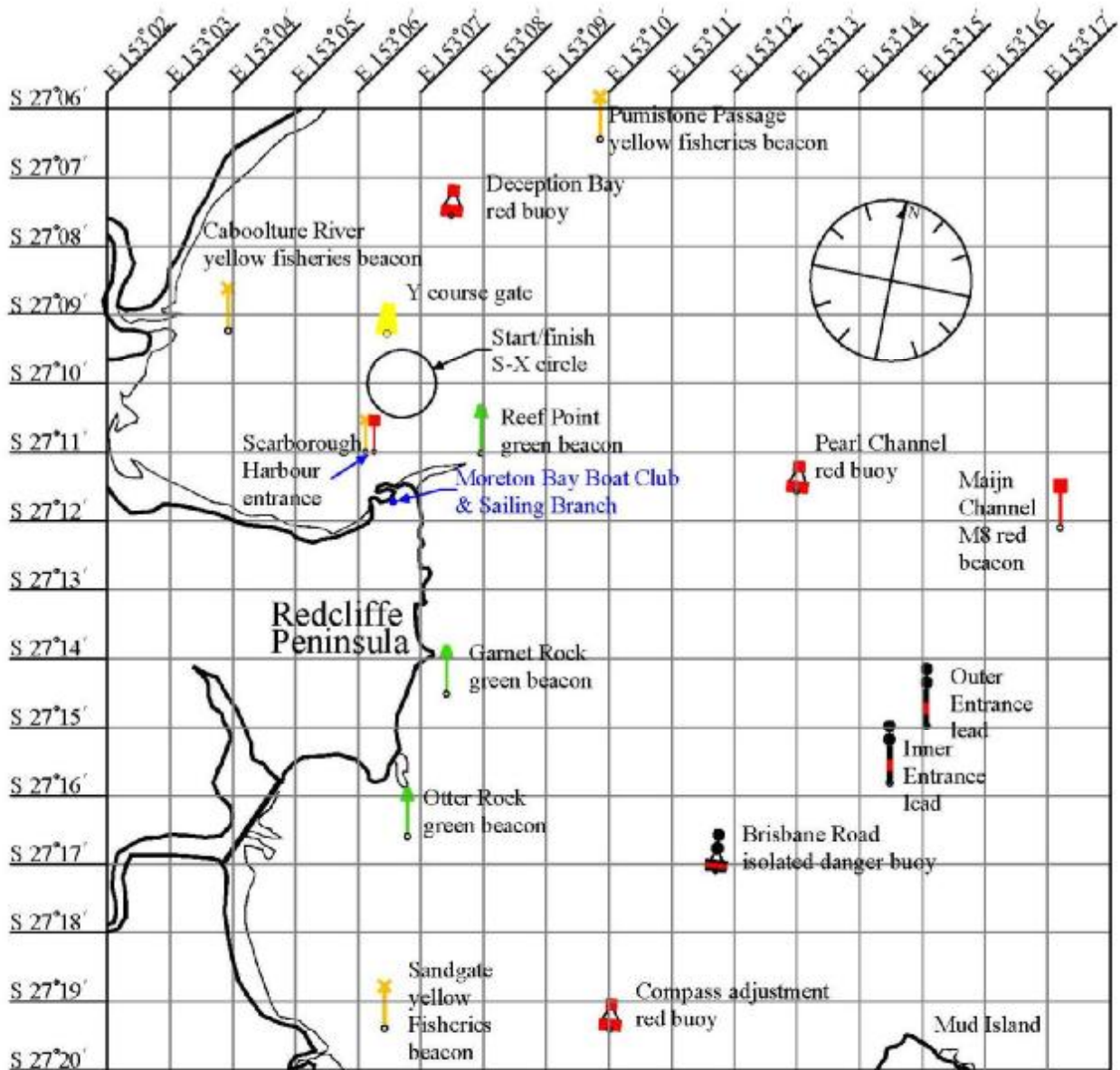
Marks of the course

All positions are close approximations and refer to WGS84 Map Datum.

Symbol	Description	Position
S	Start Line.	Varies
X	Yellow windward buoy (optional)	1 nautical mile to windward of S
CR	Caboolture River yellow Fisheries beacon.	27°09.2S 153°03.9E
DB	Deception Bay red beacon.	27°07.5S 153°07.5E
GR	Garnet Rock green beacon	27°14.6S 153°07.4E
M8	Main Channel beacon M8	27°12.1S 153°17.2E
OEL	Outer Entrance lead	27°15.0S 153°15.1E
IEL	Inner Entrance lead.	27°15.8S 153°15.5E
PC	Pearl Channel red buoy	27°11.6S 153°13.0E
RP	Reef Point green beacon.	27°11.0S 153°08.0E
BR	Brisbane Road isolated danger mark	27°17.1S 153°11.7E
BSC	Bribie South Cardinal	27°06.9S 153°09.9E
YG	Gate for course Y	27°09.3S 153°06.4E
SX-N	S-X circle North point	27°09.5S 153°06.7E
SX-NE	S-X circle North East point	27°09.65S 153°07.1E
SX-E	S-X circle East point	27°10.0S 153°07.25E
SX-SE	S-X circle South East point	27°10.35S 153°07.1E
SX-S	S-X circle South point	27°10.5S 153°06.7E
SX-SW	S-X circle South West point	27°10.35S 153°06.3E
SX-W	S-X circle West point	27°10.0S 153°06.15E
SX-NW	S-X circle North West point	27°09.65S 153°06.3E
SX-C	S-X circle centre	27°10.0S 153°06.7E



THE RACE AREA



Course diagrams include the mark rounding directions. These diagrams are available as individual sheets – one for each course or in collated form. The diagrams also indicate distance over ground between marks and distance travelled from the start at each mark. The tabulated course to be sailed on each diagram takes precedence over the diagram.

Please contact the Secretary if you have any queries regarding any aspect of the Moreton Bay Yacht Club