



NOTICE of RACE

for the 2009



MORETON BAY YACHT CLUB FAIRWAY CHALLENGE

Voyager

GAMING TECHNOLOGIES



1.0 INVITATION and EVENT DESCRIPTION

1.1 Preamble

The Moreton Bay Yacht Club invites eligible yachts to take part in its annual inter-club “FAIRWAY CHALLENGE”. The event is aimed at yachts able to safely complete an “out and back” 80 nautical mile course from the Redcliffe Peninsula to the Moreton Bay entrance NW Fairway mark (refer attached course diagram). The event will cater for “short handed” participants by way of an additional division and additional prizes.

1.2 Features of the event

The event starts to the East of the Redcliffe Peninsula and, after short spectacle legs along the foreshore, follows a course to the NW Fairway mark involving minimal use of the major shipping channels

The event offers significant public exposure due to the close proximity of the start to the elevated Redcliffe Peninsula foreshore.

The event also offers complimentary berthing of finished yachts at the Moreton Bay Boat Club Marina. Refreshments will be made available to finishing yachts.

The generous sponsorship allows significant cash prizes.

FAIRWAY CHALLENGE 2009 *continued*

1.3 Organization and support groups

The Organizing Authority is the Moreton Bay Yacht Club Inc. Support groups include the Moreton Bay Boat Club (MBBC) and the Australian Volunteer Coast Guard - Redcliffe.

The major sponsors are Voyager Gaming Technologies and Morgans Seafoods.

1.4 Event schedule

The event is purposely scheduled on the weekend of 28th and 29th February, 2009 so as to join the QCYC/SYC Surf to City, as a precursor to the Brisbane to Gladstone 2009.

The event briefing will be held at the Moreton Bay Boat Club, Bird o' Passage Pde. Scarborough at 7:30 pm on Monday 23rd February 2009.

The start of the event will be at 11:00 am on Saturday, 28th February 2009.



A discounted Harbourside Restaurant Sunday breakfast on the MBBC boardwalk will be available to the crews of all participating yachts. This is scheduled to commence at 7:30 am Sunday 29th February 2009.



Placing announcements and presentation of prizes will commence approximately 90 minutes after the last boat finishes but no earlier than 7:30 am Sunday 29th February 2009 (depending on any protest hearing). The time limit for the event shall be 12 noon on Sunday 29th February 2009. Shore activities are scheduled to conclude by 2:00 pm.

1.5 Rules

The event will be governed by this Notice of Race, the Racing Rules of Sailing 2009-2012 (RRS), the Yachting Australia Special Regulations 2005-2008, the Sailing Instructions and Maritime Safety requirements prescribed within the associated Aquatic Event Authority. The International Regulations for Preventing Collisions at Sea (ColRegs) displace and overrule the RRS absolutely between official sunset and official sunrise. All relevant information and references will be included within the sailing instructions.

2.0 ELIGIBILITY and ENTRY

2.1 Yachting Australia Special Regulation event category

Participating yachts will be required to satisfy the requirements of Yachting Australia Special Regulations 2005-2008 for Category 3 events. Modifications to the special regulations to suit the type of event are outlined in the following table.

FAIRWAY CHALLENGE 2009 *continued*

Summary of modifications to YA SPECIAL REGULATIONS Category 3		
RRS 50.2	Fixed and retractable spinnaker poles	Permitted for asymmetrical 'extras'
RRS 50.3	Bowsprits	May be used to secure the tack of a spinnaker
RRS 51	Moveable ballast (as defined within the Special Regulations 2005-2008)	May be moved for trim and stability.

NOTE:- The race entry returnable documents include a Category 3 (modified) checklist which must be completed, signed and lodged with each entry.

2.2 Racing handicap divisions

The mandatory monohull race handicap division will be Performance Handicap (PH). Entrants may also elect to enter the additional IRC and/or SH (short handed) divisions (refer Notes 1 and 2).

A separate multihull division will be included subject to the registered entry numbers (refer Note 3)

NOTE 1:- If the number of entries in either IRC or SH division is less than 5, that division will be cancelled and entrants affected will race only in the PH division. The additional entry fee(s) will be refunded.

NOTE 2:- The SH division will race under sailing instructions similar to those relating to a short handed ocean passage and 2 handed sailing. Autopilots will be assumed to be available on all SH entered yachts. The PH of yachts participating in the SH division will be adjusted 1% from the yacht's assigned PH.

NOTE 3:- If the number of entries in the multihull division is less than 3, that division will be cancelled and any fees paid will be refunded. If the number of entries in the multihull division is 3 or 4, only a first place prize will be awarded.

Current handicap indices must be provided by each entrant by way of a copy of a current PH (or arbitrary) based race result issued by a YA affiliated club and/or a current IRC certificate. The race committee reserves the right to adjust any submitted PH index on the grounds of equitability.

2.3 Entry lodgment and closing date

Race entry forms are available from the MBYC web site www.mbyc.com.au. Hard copy entries must include the entry fee (or EFT confirmation); be enclosed within a sealed envelope and be forwarded by hand or mail to the Moreton Bay Yacht Club by close of business on Friday, 30th January 2009. Entries later than that date will incur a \$20.00 late entry fee. Entries later than Friday 13th February will not be accepted.

Posted entries must be addressed to:-

**Moreton Bay Yacht Club
P.O. Box 730
Redcliffe Qld. 4020**

Emailed entries may be accepted if prior payment arrangements are agreed between the entrant and the organizing authority. The email address is secretary@mbyc.com.au.

FAIRWAY CHALLENGE 2009 continued

2.4 Entry fees

The race entry fee for both the mandatory monohull PH division and the multihull division is \$50.00.

Additional handicap divisions will attract an additional race entry fee of \$10.00 per division.

3.0 MANAGEMENT

3.1 Sailing Instructions

Sailing instructions will be available from the MBYC web site www.mbyc.com.au from 16th January 2007. Sailing Instructions will also be available at the briefing (refer 1.4 Event schedule).

3.2 Course to be sailed

The course diagram is attached to this notice. The start of the event is directly to the East of the Redcliffe Peninsula. The finish is within Deception Bay approximately 0.5 nautical miles North of the entrance to the Scarborough Boat Harbour. With the exception of brief intrusions into the shipping channels around M8, M3, NW12 and NW1, the course lies to the West of the Moreton Bay shipping channels. The presence of banks to the West of the nominated course mandates the use of a current northern Moreton Bay and shipping entrance navigation chart.

3.3 Communication

All flag signals will be flown from the committee boat. There will be no signals ashore. The committee boat can be identified by an orange flag displayed while on station.

The official radio communication channels will be VHF 77 (primary channel) and VHF 21 (secondary channel). Effective VHF communication is mandatory. This will be verified during "log on" and scheduled safety calls.

A boat shall neither transmit nor receive event related information via radio or mobile phone communication not available to all participating boats.

Maritime Safety Queensland requires yachts to monitor VHF channel 12 at certain locations adjacent to and within shipping channels. These requirements will be included within the sailing instructions. Incidents involving participating yachts reported to Brisbane Port Control by commercial shipping may result in disqualification.

Scheduled safety radio calls will be advised within the sailing instructions. Shipping movements will be advised on the day.

3.4 The presentation

The awarding of prizes is conditional upon participating yacht representation at the presentation. Generally, prizes will be awarded to 1st, 2nd and 3rd in each division and for line honours. The presentation venue will be the MBBC clubhouse, Bird o' Passage Pde. Scarborough.

FAIRWAY CHALLENGE 2009 *continued*

The arrangements and rules governing berthing at the MBBC will be advised via a separate adjunct to the sailing instructions.

3.5 Disclaimer of liability

Competitors participate in the event at their own risk. (see RRS rule 4, Decision to Race).

The organizing authority will not accept any liability for material damage or personal injury or death sustained in conjunction with, prior to, during, or after the event.

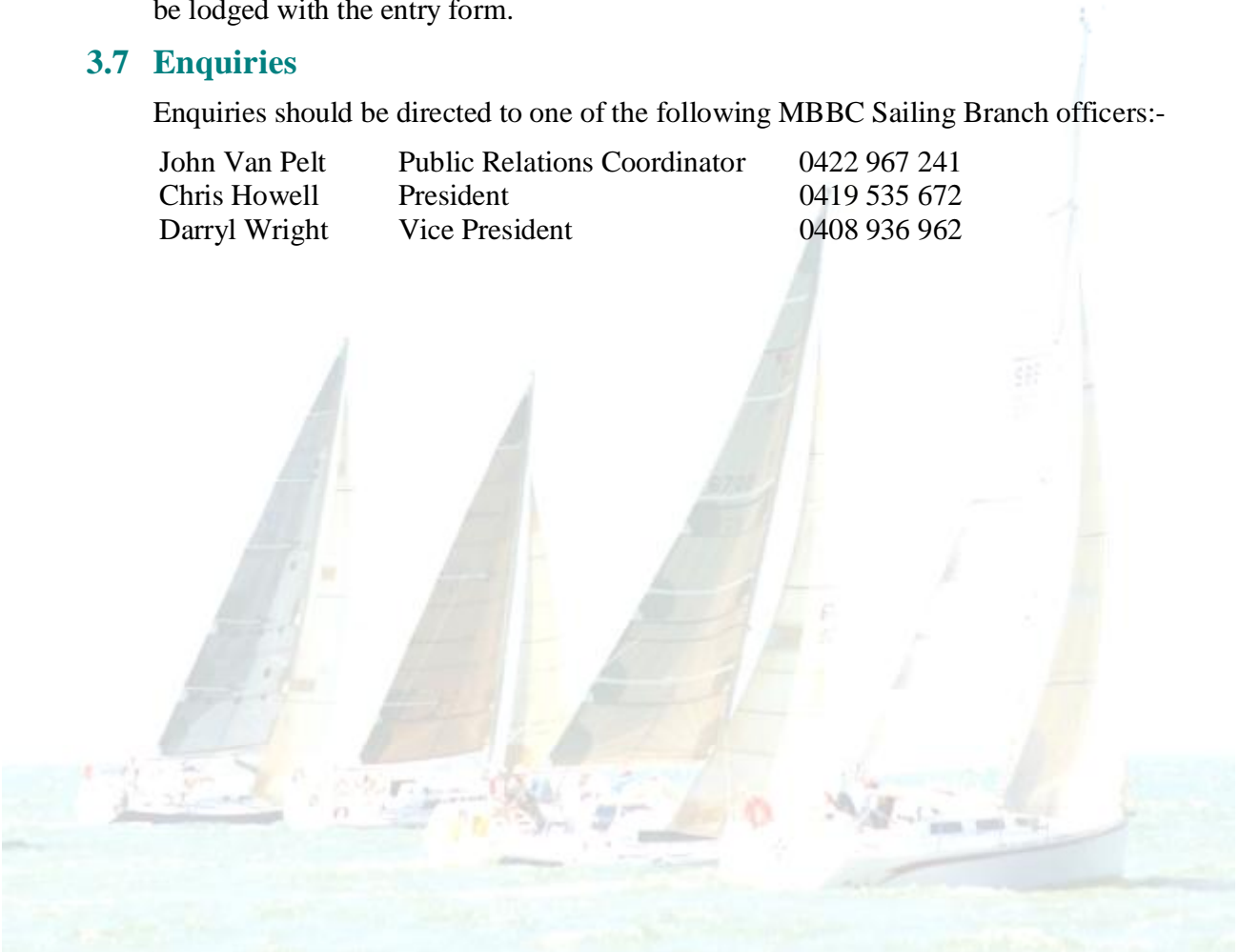
3.6 Insurance

All yachts participating in the event must be covered by a current third party insurance policy (with appropriate racing cover) with a minimum public liability of \$10,000,000.00. A copy of the certificate of currency (or an equivalent document) must be lodged with the entry form.

3.7 Enquiries

Enquiries should be directed to one of the following MBBC Sailing Branch officers:-

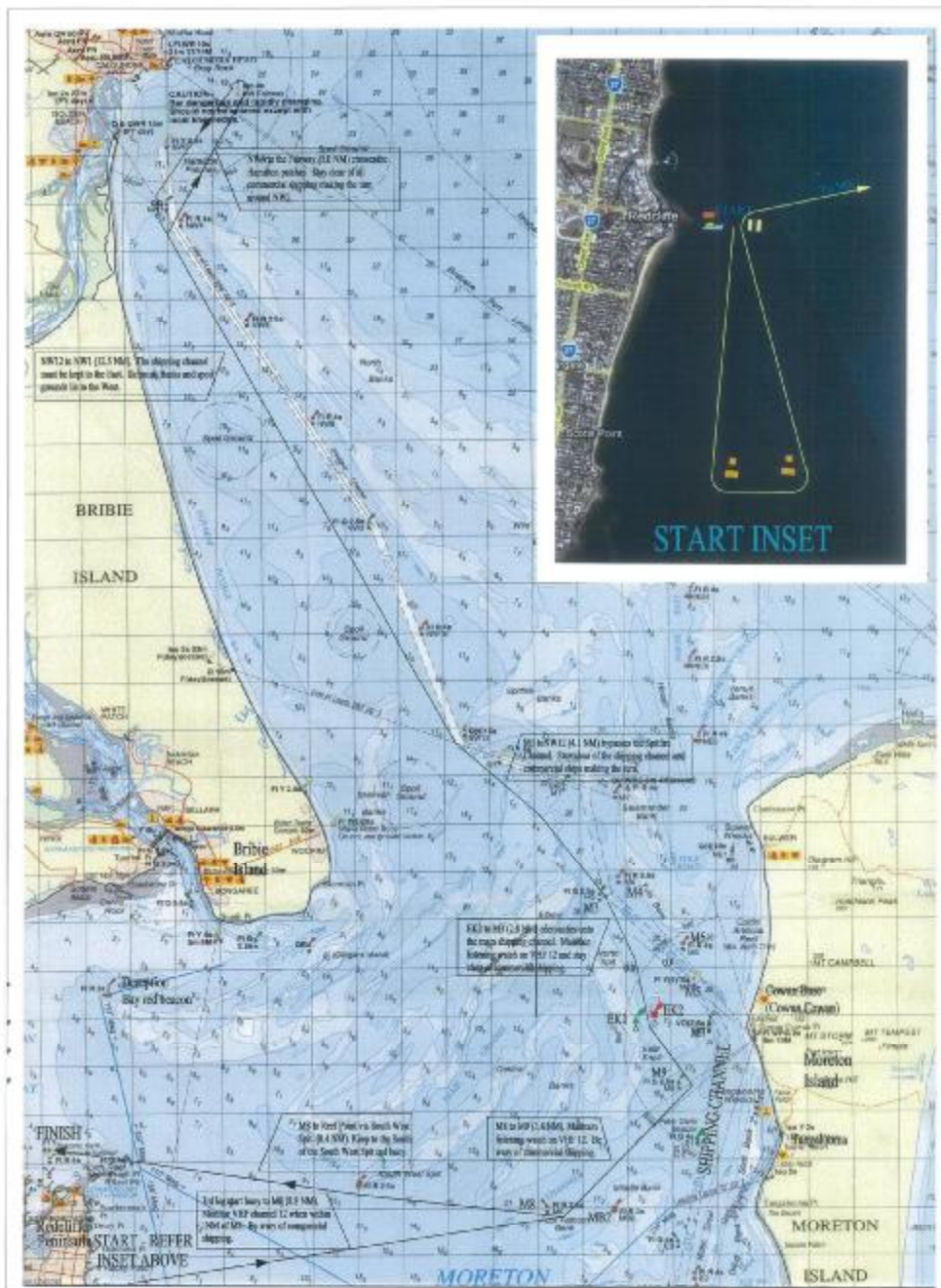
John Van Pelt	Public Relations Coordinator	0422 967 241
Chris Howell	President	0419 535 672
Darryl Wright	Vice President	0408 936 962



FAIRWAY CHALLENGE 2009 continued

4.0 COURSE DIAGRAM

The course diagram is for general reference only and must not be used for navigation. Each participant must have a current MSQ recognized chart of the race area for navigation purposes. An A3 version of the course diagram is available from the MBYC web site www.mbyc.com.au.



FAIRWAY CHALLENGE COURSE DIAGRAM