



NOTICE of RACE



MORETON BAY YACHT CLUB FAIRWAY CHALLENGE-2 And Pearl Challenge 2011

Voyager

GAMING TECHNOLOGIES



Amendments to revision 1 are in yellow highlight.

FAIRWAY CHALLENGE-2 2011 continued

1.0 INVITATION and EVENT DESCRIPTION

1.1 Preamble

The Moreton Bay Yacht Club invites eligible yachts to take part in its annual inter-club “**FAIRWAY CHALLENGE**” or the associated inaugural inshore “**PEARL CHALLENGE**”.

The **Fairway Challenge** is aimed at ocean capable yachts able to safely complete an “out and back” 80 nautical mile course from the Redcliffe Peninsula to the Moreton Bay entrance NW Fairway mark.

The **Pearl Challenge** is aimed at sports and trailable yachts able to safely complete an “out and back” 40 nautical mile course within the Moreton Bay ‘partially smooth’ (sheltered) waters.

The **Pearl Challenge** will also include a separate miscellaneous division for ‘social racing’ or ‘cruising’ yachts (mixed fleet).

The Fairway Challenge will cater for multihull and “short-handed” participants by way of an additional division and additional prizes. The Pearl Challenge will similarly cater for a multihull division but will not include a short-handed division.

1.2 Features of the event

The **Fairway Challenge** starts to the East of the Redcliffe Peninsula and, after short course spectacle legs along the foreshore, follows a course generally adjacent the shipping channels to the NW Fairway mark off Caloundra. The return course is a reverse of the outgoing course with the finish within Deception Bay to the North of the entrance to the Scarborough Boat Harbour.

The **Pearl Challenge** follows an identical course to the Fairway Challenge as far as the M3 mark to the NE of the Cowan Base on Moreton Island. After rounding M3, the Pearl Channel yachts will traverse the Pearl Channel to the South West Spit then follow a course to the Brisbane Road buoy and Reef Point to finish within Deception Bay to the North of the entrance to the Scarborough Boat Harbour.

The events offer significant public exposure due to the close proximity of the start and short course to the Redcliffe Peninsula foreshore.

The events also offer complimentary berthing of finished yachts at the Moreton Bay Boat Club Marina. Refreshments will be made available to finishing yachts.

The generous sponsorship allows significant cash prizes.

1.3 Organization and support groups

The Organizing Authority is the Moreton Bay Yacht Club Inc.

Supporting organizations include the Moreton Bay Boat Club (MBBC) and the Australian Volunteer Coast Guard - Redcliffe.

The major sponsors are Voyager Gaming Technologies, Morgans Seafoods and AV Homes.

FAIRWAY CHALLENGE-2 2011 continued

1.4 Event schedule

The event is scheduled for the weekend of 8th and 9th October, 2011 so as to provide a summer season opening ocean event and an associated inshore event. The Fairway Challenge remains as a qualifying event for the 2012 QCYC Brisbane to Gladstone .

During the week leading up to the event, MBYC committee members will be available to brief visiting skippers or crew on local conditions. Committee members will be available between 7:00pm and 9:00pm from Monday 3rd October 2011 through to Thursday 6th October 2011. Gaining local knowledge is recommended.

Complementary berths and marina facilities will be available to all relevant participants from the Friday afternoon through to Sunday. Berthing on the Friday night will be limited therefore prior arrangement via the MBYC secretary is essential.

The start of the Pearl Challenge will be at 10:00 am on Saturday, 8th October 2011. The start of the Fairway Challenge will be at 11:00 am on the same date. The time limit for both events shall be 7:00 am on Sunday 9th October 2011.

A reasonable priced buffet breakfast on the MBBC boardwalk will be available to the crews of all participating yachts. This is scheduled to commence at 6:00 am Saturday 8th and 7:30 am on Sunday 9th October 2011.

Placing announcements and presentation of prizes will commence at 9:30 am Sunday 9th October 2011 (subject to any protest hearing). Shore activities are scheduled to conclude by 2:00 pm.

1.5 Rules

The events will be governed by this Notice of Race, the Racing Rules of Sailing 2009-2012 (RRS), the Yachting Australia Special Regulations 2009-2012, the Sailing Instructions and Maritime Safety requirements prescribed within the associated Aquatic Event Authority. The International Regulations for Preventing Collisions at Sea (ColRegs) displace and overrule the RRS absolutely between official sunset and official sunrise. All relevant information and references will be included within the sailing instructions.

2.0 ELIGIBILITY and ENTRY

2.1 Statutory requirements and safety

Maritime Safety legislation

All participating yachts must comply with the safety requirements mandated by the Transport Operations (Marine Safety) Regulation. Maritime Queensland resolve this down to a simple statement.

All owners and operators, masters and crew members must ensure the ship is:

- *safe*
- *properly equipped and crewed*
- *operated in a safe manner.*

FAIRWAY CHALLENGE-2 2011 continued

Yachting Australia prescription

Yachts entering the **Fairway Challenge** will be required to satisfy the requirements of Yachting Australia Special Regulations 2009-2012 for Category 3 events.

Yachts entering the **Pearl Challenge** will be required to satisfy the requirements of Yachting Australia Special Regulations 2009-2012 for Category 5(N) events.

Modifications to the special regulations to suit the type of event are outlined in the following table.

Summary of modifications to YA SPECIAL REGULATIONS		
RRS 50.2	Fixed and retractable spinnaker poles	Permitted for asymmetrical 'extras'
RRS 50.3	Bowsprits	May be used to secure the tack of a spinnaker
RRS 51	Moveable ballast (as defined within the Special Regulations 2009-2012)	Moveable water ballast may be used only if dedicated to a system specifically designed for trim and stability.

NOTE 1:- *The race entry returnable documents include Category 3 and Category 5 checklists which must be completed, signed and lodged with each entry.*

NOTE 2:- *Yachts able to demonstrate successful completion of a 2011 'same Category' (or higher) event organized by a YA/YQ affiliated club are exempt from safety audit requirements provided the 'no change' declaration is completed (refer Entry Form).*

2.2 Racing handicap divisions

Fairway Challenge

The mandatory monohull race handicap division will be Performance Handicap (PH). Entrants may also elect to enter the additional IRC and/or SH (short handed) divisions (refer Notes 1 and 2).

A separate multihull division will be included subject to the registered entry numbers (refer Note 3)

- NOTE 1:-** If the number of entries in either IRC or SH division is less than 5, that division will be cancelled and entrants affected will race only in the PH division. The additional entry fee(s) will be refunded.
- NOTE 2:-** The SH division will race under sailing instructions similar to those relating to a short handed ocean passage and 2 handed sailing. Autopilots are recommended and will be assumed to be available on all SH entered yachts. The PH of yachts participating in the SH division will be adjusted -2% from the yacht's assigned fully crewed PH.
- NOTE 3:-** If the number of entries in the multihull division is less than 3, that division will be cancelled and any fees paid will be refunded. If the number of entries in the multihull division is 3 or 4, only a first place prize will be awarded.

FAIRWAY CHALLENGE-2 2011 continued

Pearl Challenge

The Pearl Challenge event comprises two (2) trailable/sport yacht monohull race handicap divisions being a split above and below the statistical median handicap. It also includes a social/cruising mixed fleet division. All 3 divisions will be restricted to Performance Handicap (PH) only.

A separate multihull division (MH) will be included subject to the registered entry numbers (refer Note 4)

NOTE 4:- If the number of entries in the multihull division is less than 3, that division will be cancelled and any fees paid will be refunded. If the number of entries in the multihull division is 3 or 4, only a first place prize will be awarded.

Both Events

Current handicap indices must be provided by each entrant by way of a copy of a current PH (or arbitrary) based race result issued by a YA/YQ affiliated club and/or a current IRC certificate (Fairway Challenge only). The race committee reserves the right to adjust any submitted PH index on the grounds of reasonable equitability.

2.3 Entry lodgment and closing date

Race entry forms are available from the Fairway Challenge web site at www.fairwaychallengembyc.com or via the MBYC web site www.mbyc.com.au. Hard copy entries must include the entry fee (or EFT confirmation); be enclosed within a sealed envelope and be forwarded by hand or mail to the Moreton Bay Yacht Club by close of business on **Friday, 23rd September 2011**. Entries later than that date will incur a \$20.00 late entry fee. Entries later than Friday 30th September 2011 cannot be accepted without hard evidence of exceptional circumstance or organizing authority error.

Emailed entries will be accepted if prior payment arrangements are agreed between the entrant and the organizing authority. The email address is secretary@mbyc.com.au.

Posted entries must be addressed to:-

**Moreton Bay Yacht Club
P.O. Box 730
Redcliffe Qld. 4020**

2.4 Entry fees

The race entry fees are:-

- Fairway Challenge mandatory monohull PH division \$60.00
- Fairway Challenge additional IRC division \$20.00
- Fairway Challenge additional SH division \$20.00
- Fairway Challenge multi-hull division \$60.00
- Pearl Challenge - all monohull divisions \$40.00
- Pearl Challenge MH division \$40.00

FAIRWAY CHALLENGE-2 2011 continued

3.0 MANAGEMENT

3.1 Sailing Instructions

Sailing instructions will be available from the Fairway Challenge web site at www.fairwaychallengembyc.com or via the MBYC web site www.mbyc.com.au from 15th August 2011. Revisions to the sailing instructions will be advised to entrants via email and will be posted on the MBYC web site. Sailing Instructions will also be available at the informal briefings (refer 1.4 Event schedule).

3.2 Courses to be sailed

The course diagrams are attached to this notice. The start of both events is directly to the East of Redcliffe Point (the Brisbane to Gladstone turn). The finish is within Deception Bay approximately 0.5 nautical miles North of the entrance to the Scarborough Boat Harbour. With the exception of brief intrusions into the shipping channels around M8, Spitfire Channel and NW1, the designated course lies to the West of the Moreton Bay entrance shipping channels. The presence of sandbanks adjacent the nominated courses mandates the use of a current northern Moreton Bay and shipping entrance navigation chart (e.g. MSQ chart MB1 MORETON BAY Manly to Mooloolaba).

3.3 Communication

All flag signals will be flown from the committee boat. There will be no signals ashore. The committee boat can be identified by an orange flag displayed while on station.

The official radio communication channels will be VHF 77 (primary channel) and VHF 21 (secondary channel). Effective VHF communication is mandatory. This will be verified during “log on” and mandatory position (safety) transmissions.

Participants shall neither transmit nor receive event related information via radio or mobile phone communication not available to all participating boats.

Maritime Safety Queensland requires yachts to monitor VHF channel 12 while adjacent to or within shipping channels. These requirements will be included within the sailing instructions. Incidents involving errant participating yachts reported to Brisbane Port Control by commercial shipping may result in disqualification.

Mandatory safety radio transmission requirements will be advised within the sailing instructions. Shipping movements will be advised at the briefing and on the day.

3.4 Finishing, Berthing and Trailer Parking

After completing the event, entrants having pre-arranged complimentary berthing at the MBBC marina will have full use of the marina facilities. All yachts entering the harbour will receive complimentary beverage refreshment.

The Scarborough Harbour entrance is defined by a lit yellow special mark and an associated lit port lateral mark. The entrance channel is defined by synchronized port and starboard lateral marks (refer Beacon to Beacon extract).

Deeper draft yachts should keep to the centre of the entrance



FAIRWAY CHALLENGE-2 2011 continued

channel at the turn around the rock wall.

The harbour entrance least depth occurs within the West channel of the harbour between the rock wall and the Scarborough Marina (soon after the rock wall entrance. The following table gives least depth data related to Brisbane Bar tides.

Tide Data and Scarborough Harbour Entrance Least Depth								
Friday 7 October 2011			Saturday 8 October 2011			Sunday 9 October 2011		
Time	Tide at Brisbane Bar	Harbour Entrance Least depth	Time	Tide at Brisbane Bar	Harbour Entrance Least depth	Time	Tide at Brisbane Bar	Harbour Entrance Least depth
0022	0.54	2.04	0109	0.45	1.95	0147	0.38	1.88
0613	1.70	3.20	0702	1.83	3.33	0744	1.95	3.45
1209	0.59	2.09	1304	0.53	2.03	1350	0.48	1.98
1829	2.08	3.58	1915	2.10	3.60	1954	2.10	3.60

Yachts entering the harbour will be met by a guide boat which will advise berthing locations and facilities information. Although the MBBC marina has significant visitor berthing space, yachts taking advantage of the complimentary berths must be prepared to raft if necessary.

The MBBC Marina is a 'live aboard' marina and as such general noise abatement, environmental protection and social activity responsibilities are identical to those associated within a normal urban area. Although permanent marina occupants will be aware of the event and the expected increased activity, visiting marina occupants are requested to give due cognizance to the amenity and privacy of permanent occupants.

A substantial public car and trailer park is situated adjacent to the MBBC premises. This is served by a public boat ramp at the NE of the harbour. Trailable yachts requiring a deeper water launch will be able to use either of the MBBC boat ramps within its secure area. However, due to member privilege, parking of visitor cars and trailers in this area is not permitted. Once visiting yachts are launched, cars and trailers must be returned to the public carpark.

A second public car and trailer park and associated public boat ramp are situated adjacent the Coast Guard premises accessible via Thurecht Pde.

The arrangements and rules governing berthing and parking at the MBBC will be further described and at the mandatory briefing.

3.5 Presentation and prizes

The presentation venue will be the MBBC clubhouse, Bird o' Passage Pde. Scarborough, commencing at 9:30 am on Sunday 9th October 2011. (subject to any protest hearing).

Awarding of prizes is conditional upon participating yacht representation at the presentation. Generally, prizes will be awarded to 1st, 2nd and 3rd in each division and for line honours.

FAIRWAY CHALLENGE-2 2011 continued

3.6 Disclaimer of liability

Competitors participate in the event at their own risk. (refer RRS rule 4, Decision to Race).

The organizing authority will not accept any liability for material damage, personal injury or death sustained in conjunction with, prior to, during, or after the event.

3.7 Insurance

All yachts participating in the event must be covered by a current third party insurance policy (with appropriate racing cover) with a minimum public liability of \$10,000,000.00. A copy of the certificate of currency (or an equivalent document) must be lodged with the entry form.

3.8 Enquiries

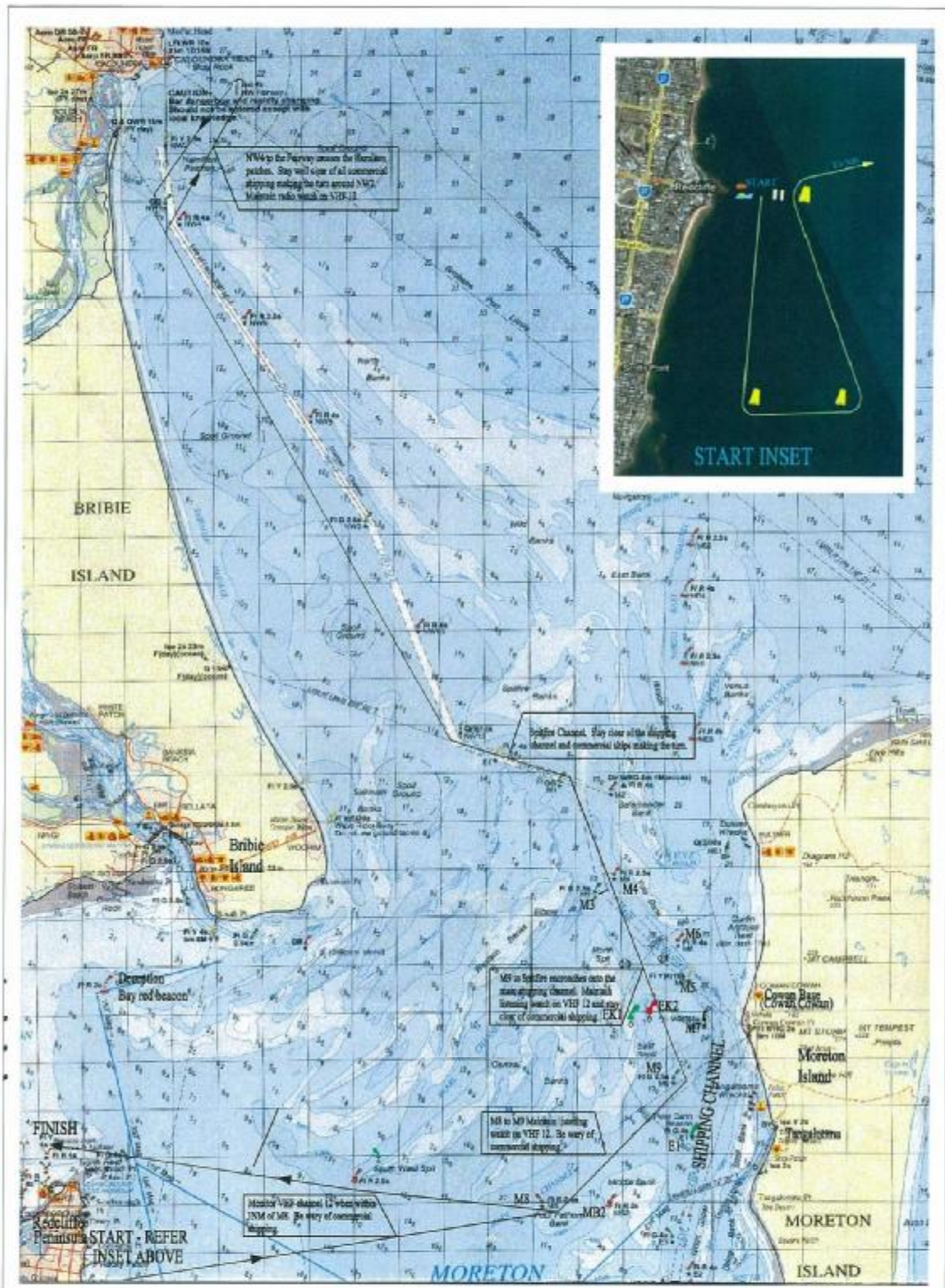
Enquiries should be directed to one of the following MBYC committee members:-

Shona Lawrie	Secretary	0450 080 799	secretary@mbyc.com.au
Darryl Wright	Vice President	0408 936 962	
Lachy Warlters	Principal Race officer	0407 013 426	

4.0 COURSE DIAGRAMS

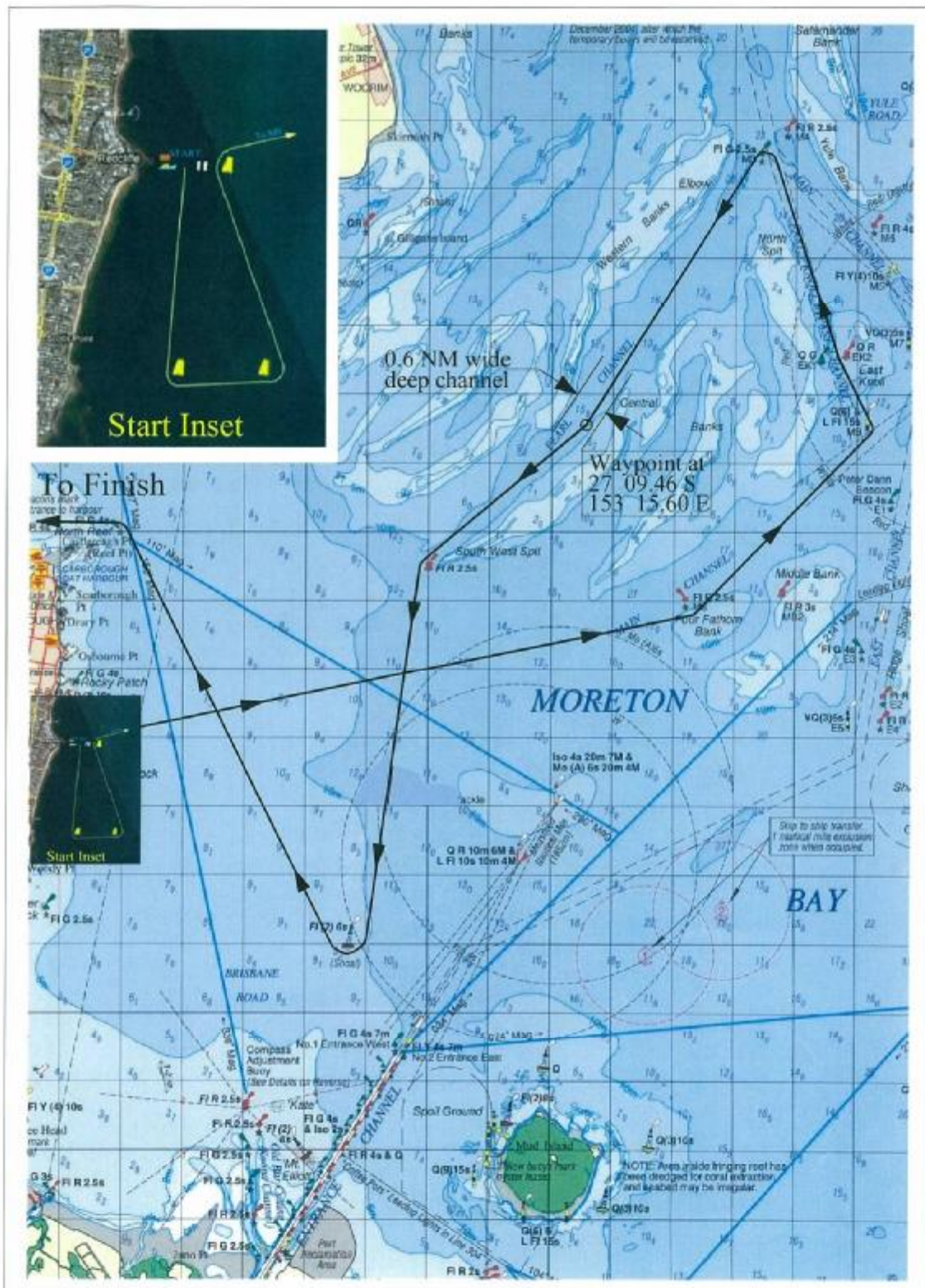
The course diagrams are for general reference only and must not be used for navigation. Each participant must have a current MSQ recognized chart of the race area for navigation purposes. Course diagrams are also available from the Fairway Challenge web site at www.fairwaychallengembyc.com or via the MBYC web site www.mbyc.com.au.

FAIRWAY CHALLENGE-2 2011 continued



FAIRWAY CHALLENGE COURSE DIAGRAM

FAIRWAY CHALLENGE-2 2011 continued



Pearl Challenge Course Diagram