

MORETON BAY YACHT CLUB

SAGS and WAGS SAILING MANUAL

2011

CONTENTS

- 1. Preamble**
- 2. Eligibility**
- 3. Starting and finishing**
- 4. SAGS / WAGS Courses**
- 5. Course for the day**
- 6. General event rules**
- 7. Entry Fee**
- 8. Start times**
- 9. Prizes**
- 10. Penalties**
- 11. Management Committee & contact details**
- 12. Marks of the course**
- 13. Aquatic Event Authority requirements**

MORETON BAY YACHT CLUB
WAGS and SAGS Sailing Instructions

1. Preamble

Saturday Afternoon Good Sailing (SAGS) and **Wednesday Afternoon Good Sailing (WAGS)** events are fun “cruising in company” events sailed in Deception Bay. Spinnakers and other “extras” are not allowed. ***This does not exclude sail changes nor the use of inner staysails, foresails or mizzens in the case of cutter, schooner or ketch rigs.*** For these events “extras” are defined as sails not permanently attached to a stay or spar on the centreline of the boat.

These pursuit events are conducted on the basis of a handicap start. The aim is to have all boats finishing within a relatively short time span. This facilitates the participants being able to socialise as a group at the MBBC clubhouse after each event.

SAGS are held every Saturday throughout the year. One event in each month is an **Australia-wide Bavaria** sponsored event. WAGS are held every Wednesday. The staggered start times are based on a nominal 1:00 pm start.

All participants receive either a positive or a negative time adjustment after each event thereby ensuring a gradual distribution of prizes over time. This is a prescribed adjustment that penalises placegetters and rewards all participants. Consequently, a boat in cruising mode is not penalised unnecessarily.

The normal requirement for logging on/off by radio is generally not in force for these events. Notwithstanding, appropriate radio watch is a requirement. Single handed sailing is permitted provided at least one other participating boat is made aware by hail or radio.

Members are encouraged to bring guests and socialise at the Moreton Bay Boat Club after these events.

2. Eligibility

2.1 Non-members and visiting yachts

Non-members and visiting yachts are welcome to participate in a maximum of two (2) events (consecutive or otherwise). Such participants are deemed to be establishing handicap and are therefore not eligible to receive prizes. Continued participation is subject to cl. 2.2.

2.2 Members and continuing participation

The events are open to any yacht complying with the following:-

- compliance with Queensland Transport safety requirements for the type and size of vessel;
- the owner of the yacht and at least one person on board during the event must be at least a social member of the MBBC and a full member of the MBYC (this may be the same person)
- the above conditions must be met prior to the 3rd entered event. (refer section 7. **Entry Fee.**)

3. Starting and finishing

3.1 The start

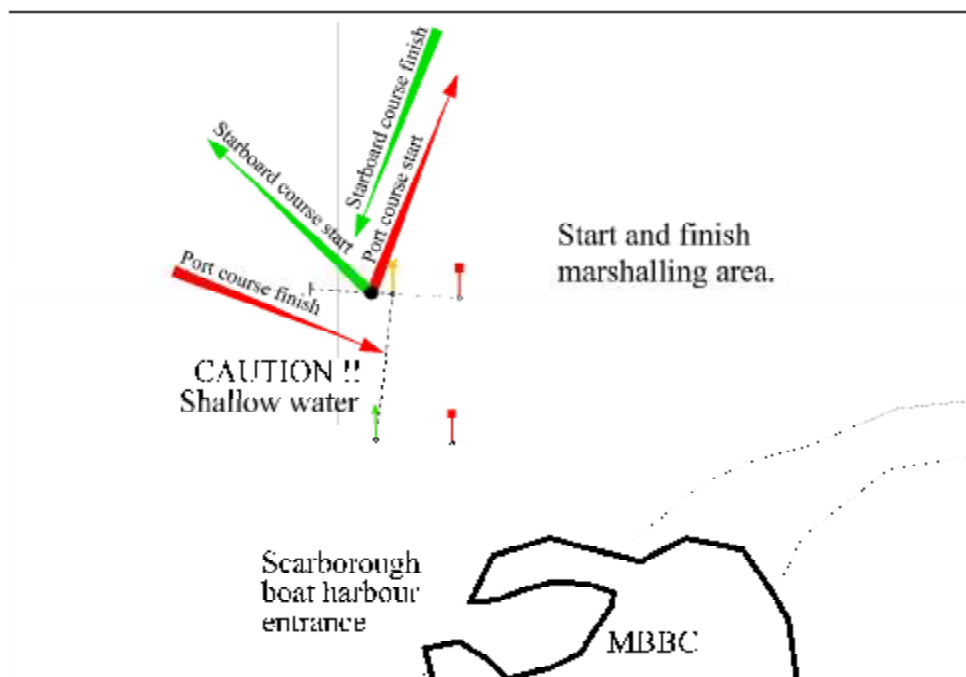
The start line is a 50m long imaginary line being the West transit of the red lateral mark and the yellow special mark at the entrance to the Scarborough Harbour (refer Fig. 3). A buoy marking the 50m distance (approximately) may be set. This is an indicative limit mark and may not necessarily be exactly on the start line. It should be treated as if it was a North cardinal.

3.2 The finish

The **Port Course** finish line is an imaginary line between the Scarborough Harbour entrance yellow special mark and the green lateral beacon to its South (refer Fig. 3). Deeper draft vessels need to be wary that water adjacent the green lateral is shallow. The North end of the line is the favoured end.

The **Starboard Course** finish line is a 50m long imaginary line being the West transit of the red lateral mark and the yellow special mark at the entrance to the Scarborough Harbour (i.e. the start line -refer Fig. 3)..

Fig. 3 –SAGS/WAGS Start & Finish



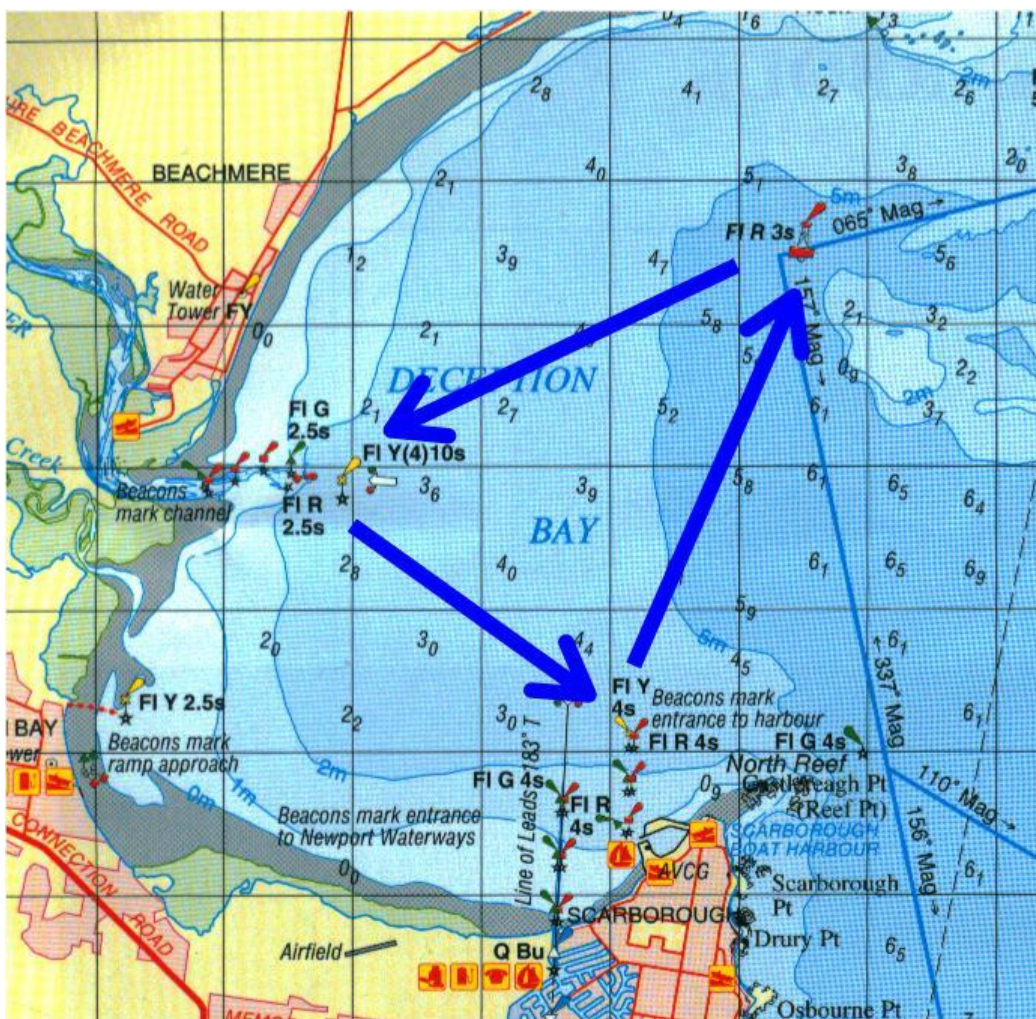
MORETON BAY YACHT CLUB
WAGS and SAGS Sailing Instructions

4. SAGS / WAGS Courses

4.1 Port Course - Refer Fig. 4.1 (Red flag may be displayed)

- **Start,**
- **Deception Bay red beacon to port**
- **Cabooture River yellow fisheries beacon to port**
- **Finish.**

Fig. 4.1 Port Course

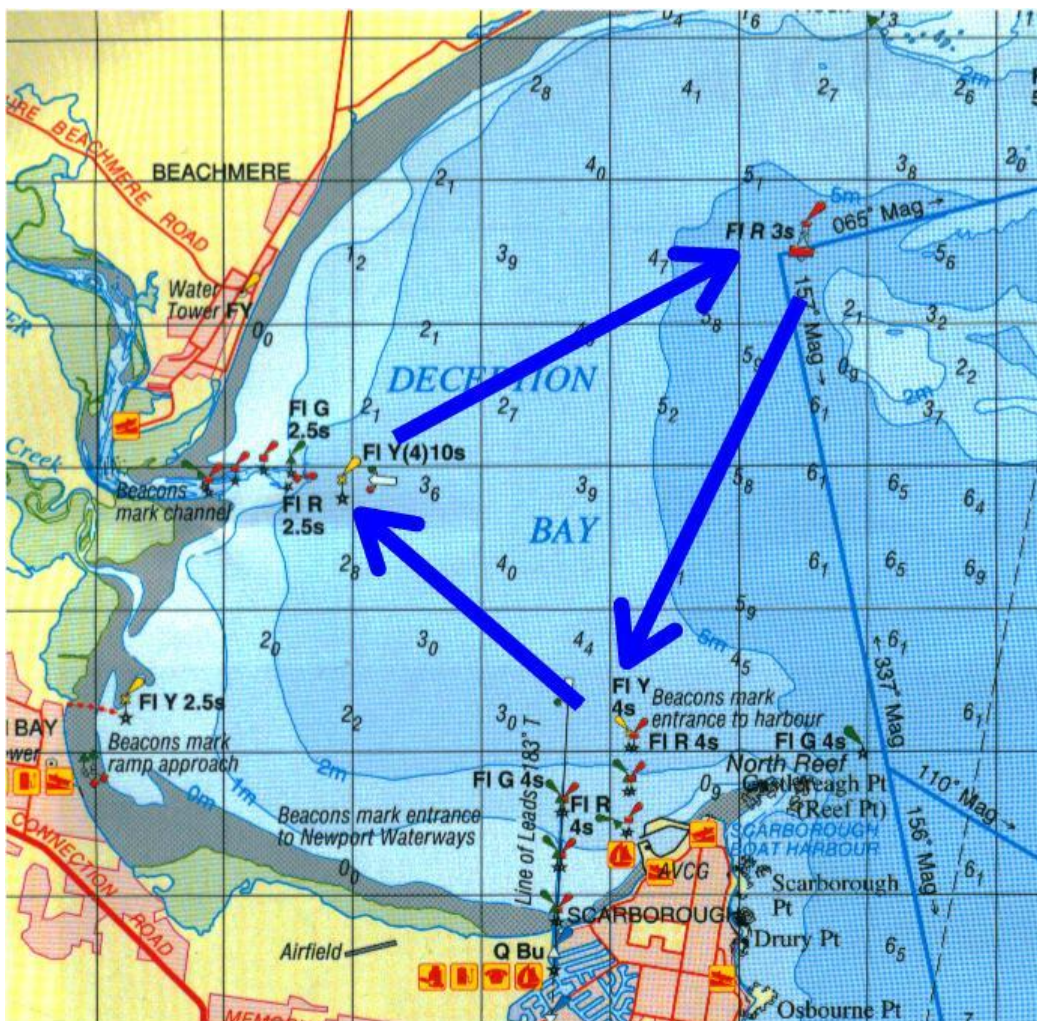


MORETON BAY YACHT CLUB
WAGS and SAGS Sailing Instructions

4.2 **Starboard Course** -Refer Fig. 4.2
(Green flag may be displayed)

- **Start,**
- **Caboolture River yellow fisheries beacon to starboard**
- **Deception Bay red beacon to starboard**
- **Finish.**

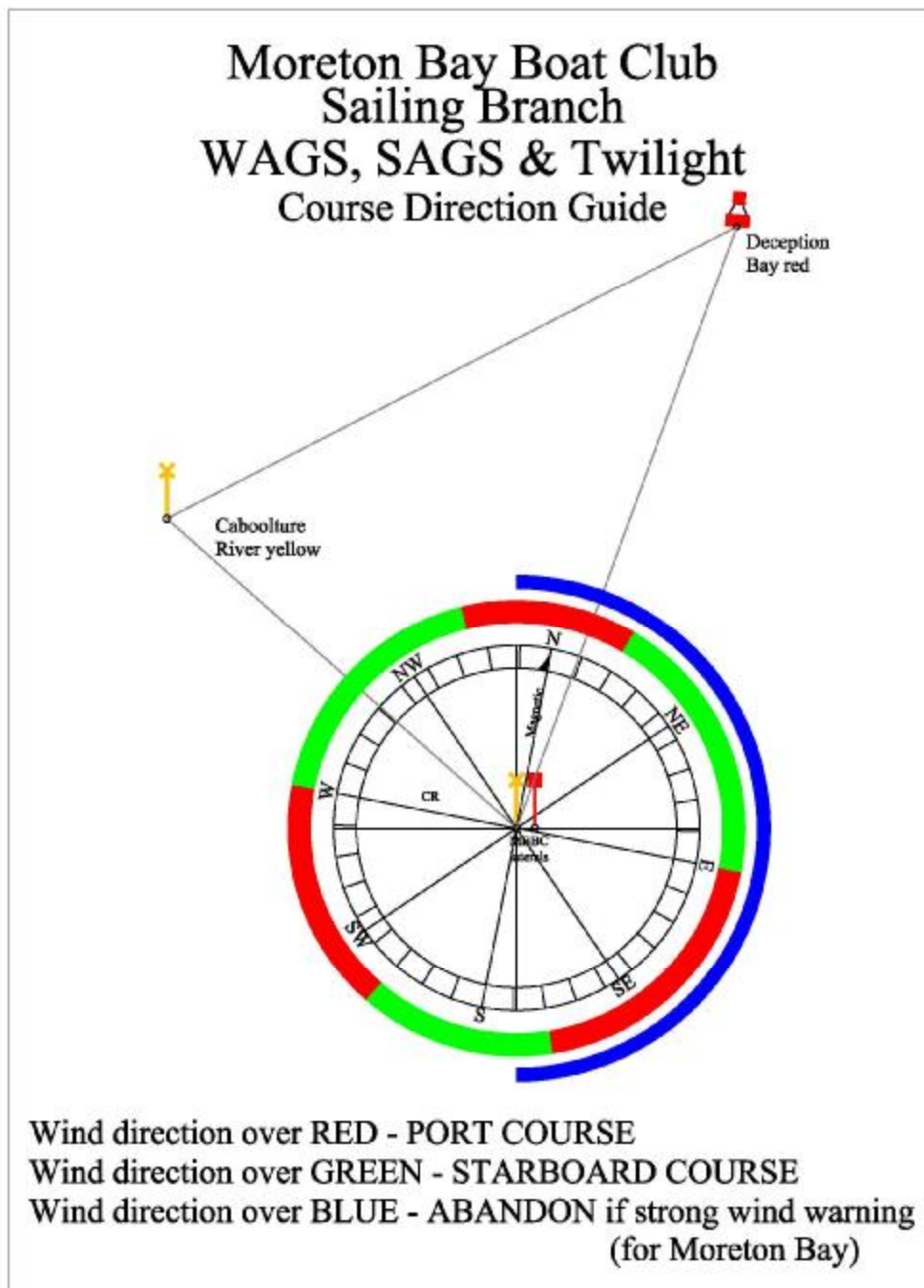
Fig. 4.2 STARBOARD COURSE



MORETON BAY YACHT CLUB
WAGS and SAGS Sailing Instructions

5. SAGS / WAGS Course for the day

The choice of the course to be sailed is determined by either a designated event officer or the earliest starting participant (whichever comes first, but usually it is the first boat to start). A designated event officer may fly a red or green flag to indicate the course. The selected course should be such that one of the legs of the course is the best fit to a work to windward. The following guide should be consulted.



6. General Event Rules

The Racing Rules of Sailing published by Yachting Australia do not formally apply to these social events. However, the International Rules for the Prevention of Collision at Sea (the Col..Regs..) are statutory and remain in force at all times.

The aim of SAGS and WAGS is for all to have a social sail in amiable company. Differences of opinion are settled socially at the MBBC clubhouse after the event. The club is not empowered to “rule” on any breach of the Col.Reggs., however, the management committee will offer an opinion if requested.

These events are “pursuit” events during which overtaking is the fundamental objective. This mandates special attention to Col.Reggs. Rule 5 (*Look-out*) and Rule 7 (*Risk of collision*). If in doubt, assume a risk exists and take early (and courteous) action (Rule 7 (a)).

Operational radio communication facilities are mandatory for each participating yacht. The designated communication channel is VHF 77. For safety assistance, Redcliffe Coast Guard and VMR Bribie Is. use VHF 73 and relay channel VHF 21.

The events **shall be abandoned** when a strong wind warning is current for Moreton Bay **AND there is an Easterly component** (e.g.. NE, E, SE). [These events are not necessarily abandoned if a strong wind warning is current for coastal waters only.] The events **should** be abandoned in any case where conditions are deteriorating and becoming potentially unsafe.

The events **must be abandoned absolutely** if there is a gale warning issued at any time before or during the event.

The decision to abandon is first based on the weather forecast prior to the event. The Bureau of Meteorology (BOM) issues a report for Moreton Bay as well as a specific **Wind Warning report** for Coastal Waters and Moreton Bay. To check if there is a current wind warning for Moreton Bay, access the BOM web page <http://www.bom.gov.au/weather/qld/> and look at “Warnings for Queensland”. If there is a current warning it will appear under this heading. This only affects the social events if it specifically states that the warning **INCLUDES** Moreton Bay.

To be fair to all who may need time to travel to the bay or rig trailer sailers, the forecast at, or closest to, 11.00 am is the cut-off time for the decision to abandon any SAGS or WAGS event.

Subsequent decisions are based on information available at the time.

On completion of the event, participants, particularly placed participants (1st, 2nd or 3rd), are encouraged to attend the MBBC clubhouse for socialising and presentation of prizes (refer 9. **Prizes** and 10. **Penalties**).

The designated event officer (or delegate) obtains the appropriate prizes from the bar manager. The bar receipt book must be initialled by the prize collector to validate the purchase as being on the behalf of the Moreton Bay Yacht Club.

MORETON BAY YACHT CLUB
WAGS and SAGS Sailing Instructions

7. Entry Fee

The annual MBYC membership fee includes the entry fees for SAGS and WAGS. This annual fee must be paid prior to participation in a 3rd event. Non-financial members will be removed from the start time sheets.

8. Start Times

Start times are adjusted after each event and the revised times emailed to members. There are separate sheets for the WAGS, SAGS and Australiawide Bavaria sponsored SAGS.

Participants must start on or after their designated start time. If a boat starts before its designated time, it may not qualify as having started the event and may not be eligible for a prize or for the bonus minute.

Each boat starting is brought forward one minute for the next event. Placed boats are penalised by adjustment backward.

All boats who officially start any event and complete at least 1 leg of the course (or are becalmed for more than 1 hour) will qualify for the bonus minute added to their next start time.

There must be 3 or more participants, otherwise the event is abandoned.

9. Prizes

	Normal SAGS	Australiawide Bavaria SAGS
3 starters -	1 st place only – 6 stubbies	700 mL rum
4 or 5 starters	1 st place - 6 stubbies	700 mL rum
	2 nd place - 4 stubbies	350 mL rum
6 or more starters -	1 st place - 6 stubbies	1150 mL rum
	2 nd place - 4 stubbies	700 mL rum
	3 rd place - 2 stubbies	350 mL rum

Event results are updated on the start time sheet(s) and emailed to all financial members. Financial members without an email address may request a hard copy.

There are three (3) individual and independent start time sheets for each of the normal WAGS, SAGS and Australiawide Bavaria SAGS.

MORETON BAY YACHT CLUB
WAGS and SAGS Sailing Instructions

10. Penalties :

WAGS and SAGS:

No of Starters	Award	Penalty
Up to 3	1 st place	-6 minutes
4 or 5	2 nd place	-4 minutes
6 or more	3 rd place	-2 minutes
+ 1 minute for starting in each event (refer 8. Start Times).		

11. Management Committee & contact details

11.1 The Management Committee

President :	John Hyne	0400 383 766	
Vice President :	Darryl Wright	0408 936 962	
Secretary :	Shona Lawrie	0450 080 799	secretary@mbyc.com.au
Treasurer :	Nigel Bucknell	0438 050 945	
Principal Race Officer :	Michael O'Halloran	07 3888 0515	
Handicapper :	Nick Bruijn	0428 715 832	
Property Officer :	vacant		
Public Relations :	John van Pelt	0422 967 241	
Webmaster :	Bill Goodward	07 3889 0254	
WAGS/SAGS Coordinator :	Jane Du Pree	0404 744 945	

11.2 Contact addresses

Postal address :

The Secretary
Moreton Bay Yacht Club
P.O. Box 730
Redcliffe
Qld 4020

Email secretary@mbyc.com.au

Web site <http://www.mbyc.com.au>

MORETON BAY YACHT CLUB
WAGS and SAGS Sailing Instructions

11.3 General meetings

Usually held on the first Tuesday of every second month at MBBC commencing at 7.30pm (Refer calendar).

Complaints and queries should be raised at the general meetings or with a member of the management committee.

12. Marks of the course

All positions refer to WGS84 Map Datum.

Mark	Description	Position (approx.)	
Start/finish	Refer Section 3 and Fig. 3.		
CR	Caboolture River yellow beacon	S 27°09.2'	E 153°03.9'
DB	Deception Bay red beacon	S 27°07.6'	E 153°07.65'

13. Aquatic Event Authority and other requirements

The following are Maritime Safety Queensland prescriptions and safety issues embedded within the aquatic event authority governing the events. These prescriptions relate to the regulation under the Transport Operations (Marine Safety) Act 2004.

1. The organising authority (MBYC) has established a relationship with the Redcliffe Coast Guard whereby, coupled with its normal duties, it will respond to emergency situations that may arise during MBYC events. The Coast Guard should not be called on trivial matters.
2. All participating vessels and operators of such vessels must comply with the Transport Operations (Marine Safety) Act 2004 and the associated Regulation. This includes the Col.Reggs.
3. The authority to conduct this event does not give competitors rights and privileges greater than those of other mariners (recreational or commercial). The Col.Reggs apply equally to all mariners within or around the event area. This is particularly pertinent to boats at anchor, boats working and boats plying the Scarborough Harbour entrance.
4. Event participants **must give way to all shipping**. For this prescription, shipping is deemed to mean any commercial shipping (e.g. the Dolphin Wild Moreton Is. excursion vessel and local trawlers)

oooOOOooo